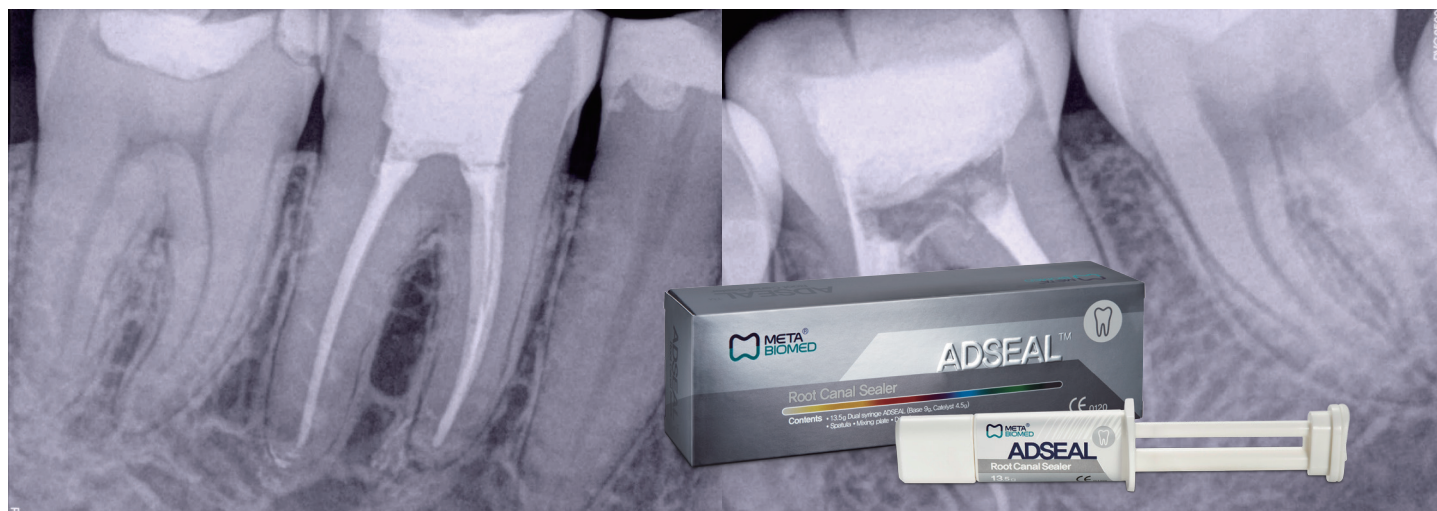


ADSEAL

Ideal Root Canal Sealer
Epoxy-resin based



Courtesy of Dr. Jenner Argueta

Evaluation Criteria(ISO6876)

- Solubility
- Flowability
- Setting Time
- pH Value
- Radiopacity

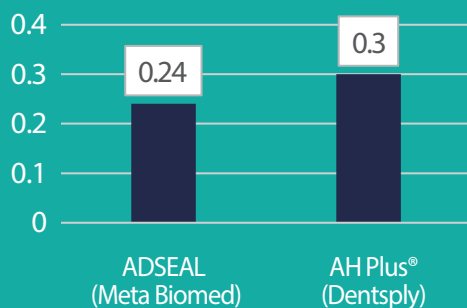


Excellent sealing ability
Picture at 6-mm sections of canal filled with
ADSEAL [1]

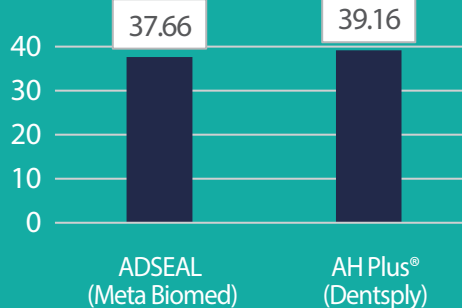
ADSEAL

Doesn't easily dissolve
Flows well within the canal

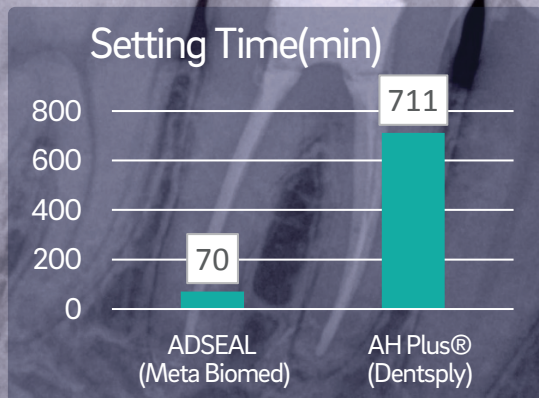
Solubility (%)



Flowability (mm)



ADSEAL Sets faster



Courtesy of Dr. Jenner Argueta

Presentation

Contents	Dimension	Weight
13.5g dual syringe (base 9g, catalyst 4.5g) Spatula, Mixing Plate	55x180x40(mm)	98g

Reference

	Standard ISO6876	ADSEAL (Meta)	AH Plus® (Dentsply)
Solubility(%)	≤3% for 24hrs	0.24±0.00 [1]	0.30±0.02 [1]
Flowability(mm)	≥20mm	22.30 [2]	22.51 [2]
Setting time(min)	When ≤30 min, ≤110% stated by the manufacture When >30 min, <72 hours, within the range (min)	70±9.0 [1]	711.33±95.03 [1]
Film Thickness(um)		65.00±7.07 [1]	43.65±0.49 [1]
pH after initial / 4weeks	N/A	9.06±0.47 7.49±0.74[2]	9.33±0.28 6.40±0.47[2]
Radiopacity	≥3 mm aluminum thickness	4.71 [2]	10.02 [2]

[1] Marina A. Marciano, DDS et al. Physical Properties and Interfacial Adaptation of Three Epoxy Resin-based Sealers (JOE, Volume 37, Number 10, Oct 2011)

[2] Lee et al. Physicochemical Properties of Epoxy Resin-Based and Bioceramic-Based Root Canal Sealers